

# Grampians eReferral Project

Proof of Concept: "Cancer Services specialist eReferral templates"

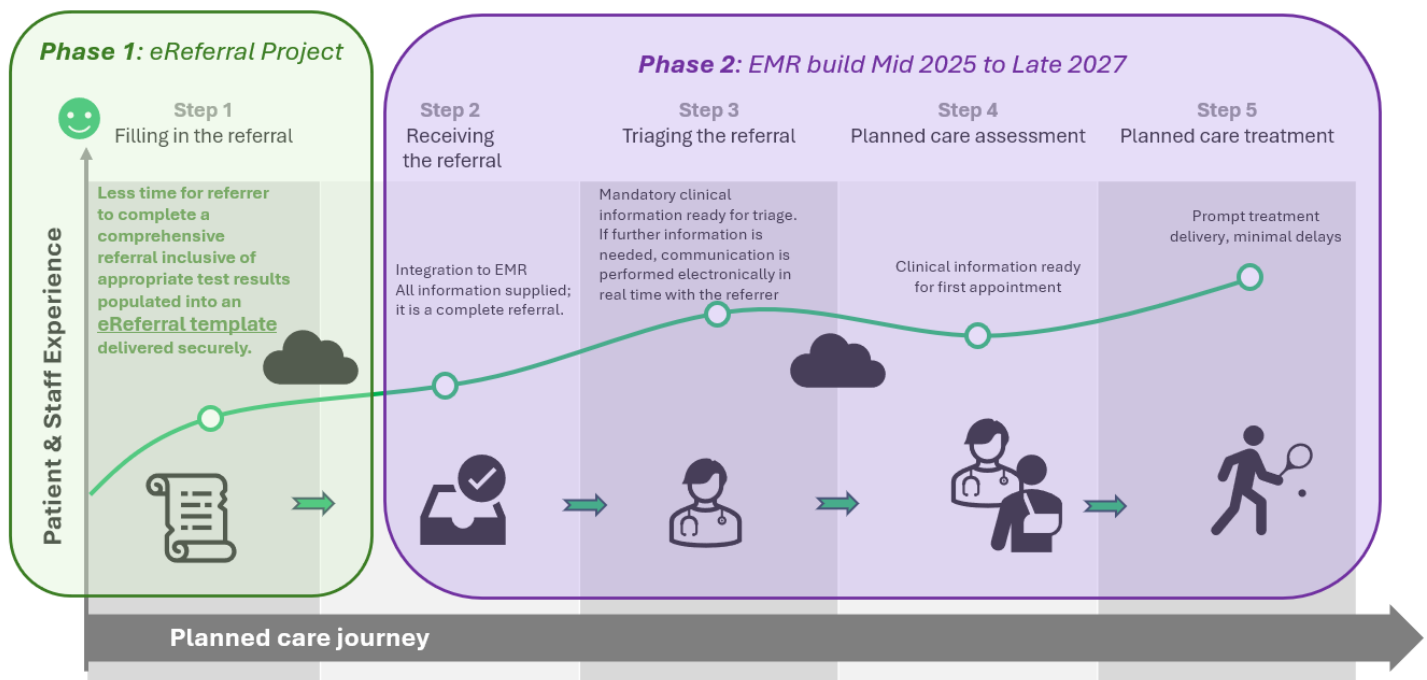
## What is eReferral

- eReferral is an end-to-end encrypted smart form
- The eReferral smart form is populated with demographic and clinical information from an external referrers practice system or via the vendors portal
- eReferral securely exchanges patient information into the Local Health Services Network nominated intake address

*The eReferral project is a Victorian Government, Department of Health funded project*

[Example Smart Form - video](#)

## Proposed eReferral flow



## Purpose and Scope of the eReferral project

### Purpose:

To embed the use of eReferral for specialist cancer services in Victorian public health services (VPHS) referencing the optimal care pathways, for Grampians Local Health Services Network (LHSN).

### Scope:

- Referrers select the cancer service referral template (inclusive of Oncology, Haematology, Radiation Oncology) or a generic referral template for other Specialist Services
- eReferral is populated with demographic & clinical information from the referrers practice management system as well as reason for referral
- eReferral is encrypted and sent securely to a validated referral intake address at Grampians Health

*This proof of concept project will be evaluated for expansion for additional eReferral templates at Grampians LHSN. For more information please email [ereferralmanager@gh.org.au](mailto:ereferralmanager@gh.org.au)*